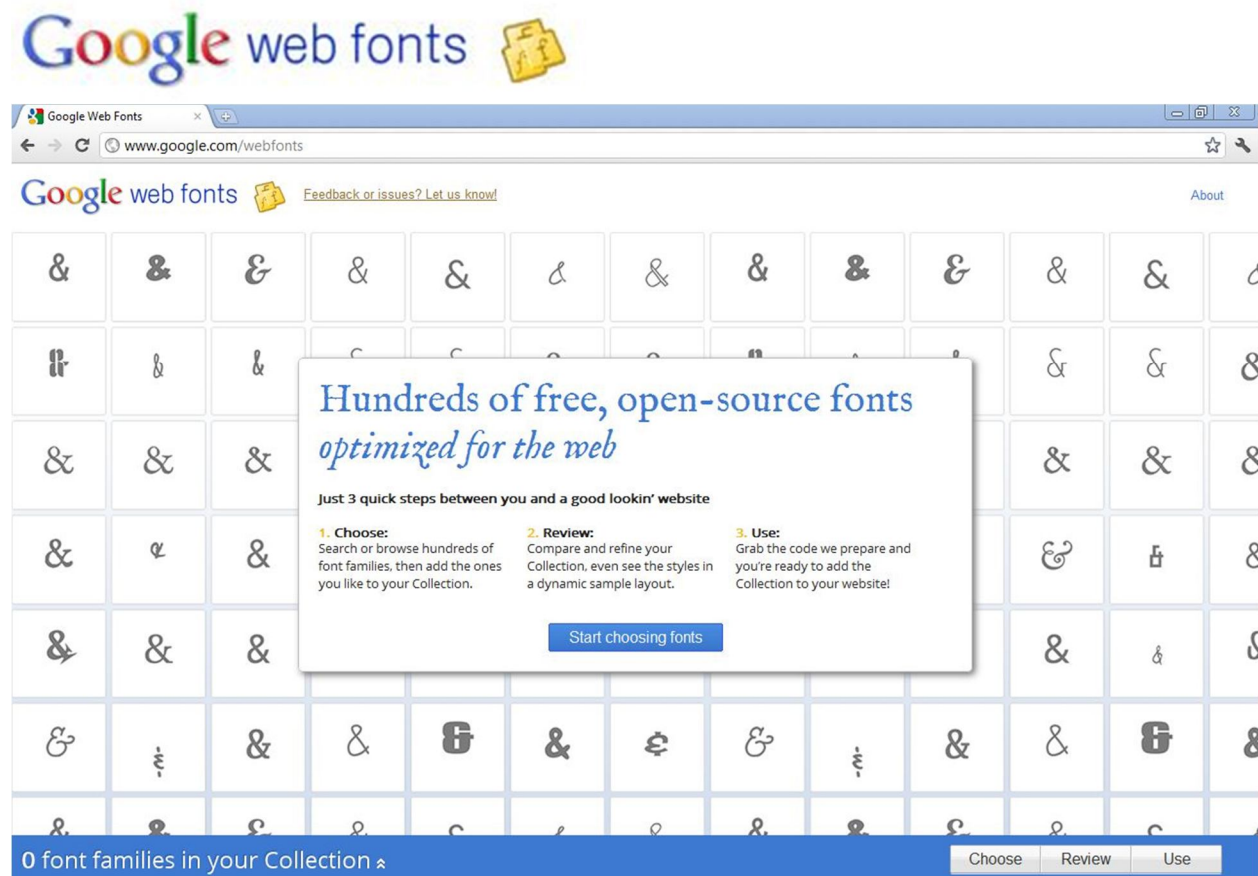


Hey guys!

Few days ago, I found this wonderful website which lets you embed custom/non-standard fonts into your website and hence make your website more professional and attractive. I found it very awesome because of its ease of use and doesn't require almost none programming needs.

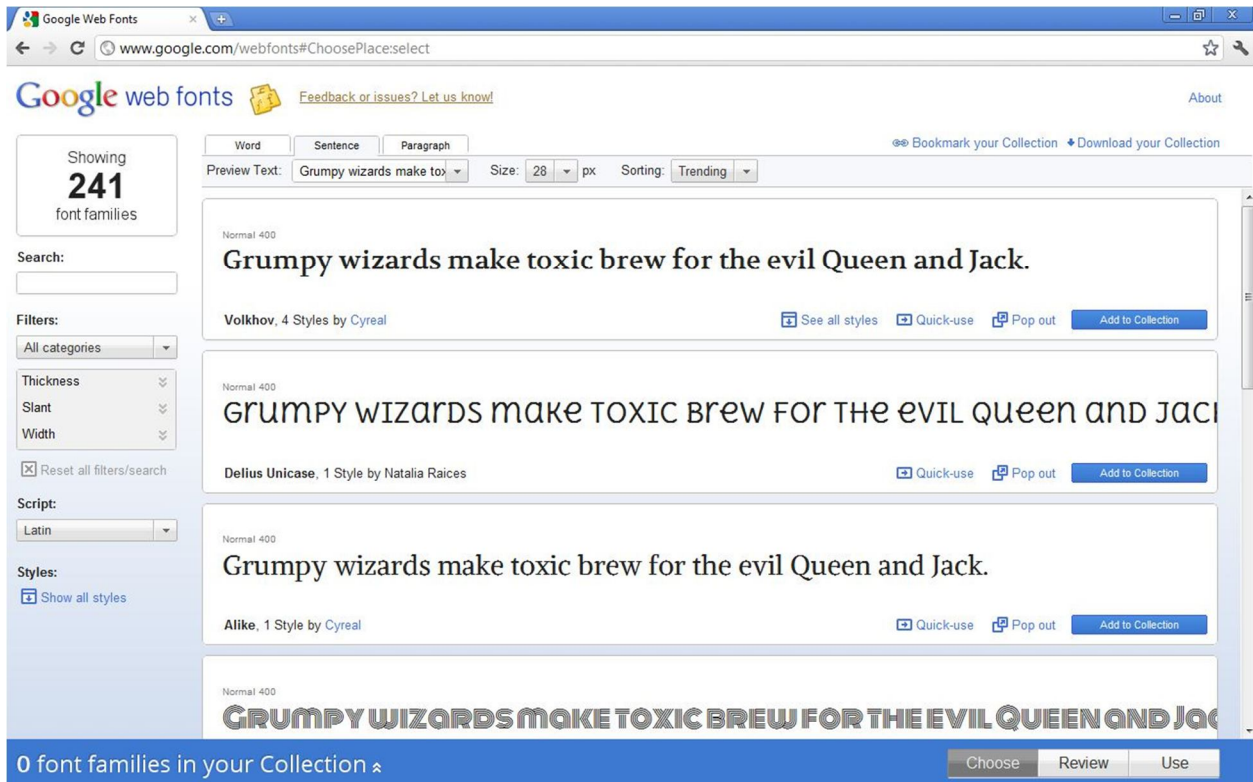
Well, I am sharing it with you so that you also get benefited. It is really very simple, open source and 100% working

Step 1. Go to Google Web fonts website <http://www.google.com/webfonts>

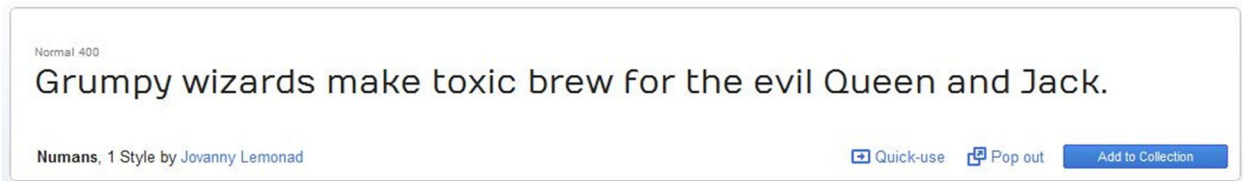


Click 'Start choosing fonts' button and you are presented to the page as shown in the next image:

For more tips and tricks, you can visit us at <http://blog.coldfireshdesignstudio.com/>



Step 2: Browse and select the font which you want to use in your website.



Step 3: Click 'Quick Use' link.

It will take you to a new page like shown below.

1. Choose the styles you want:

- Numans
 - Normal 400 Grumpy wizards make toxic br



Impact on page load time

Tip: Using many font styles can slow down your webpage, so only select the font styles that you actually need on your webpage.

For more tips and tricks, you can visit us at <http://blog.coldfireshdesignstudio.com/>

Step 4: If there are variants of the font, it will be listed and you can select which one(s) you want to use.

When you scroll down on the same page, you'll see its implementation method. I recommend you to use the 'standard' one as it is simple and less time consuming.

Standard @import Javascript

3. Add this code to your website:

```
<link href='http://fonts.googleapis.com/css?family=Numans' rel='stylesheet' type='text/css'>
```

Instructions: To embed your Collection into your web page, copy the code as the first element in the <head> of your HTML document.

» See an example

Step 5: Next you can see how to use it in your CSS.

4. Integrate the fonts into your CSS:

The Google Web Fonts API will generate the necessary browser-specific CSS to use the fonts. All you need to do is add the font name to your CSS styles. For example:

```
font-family: 'Numans', sans-serif;
```

Instructions: Add the font name to your CSS styles just as you'd do normally with any other font.

Example:

```
h1 { font-family: 'Metrophobic',  
      Arial, serif; font-weight: 400;  
}
```

That's all. I hope you enjoyed this and learnt something new.

Disclaimer: Google, Google Webfonts and Related Google Logos or screenshots belong to their respective owners. We are using them for educational purpose only and not any commercial use.